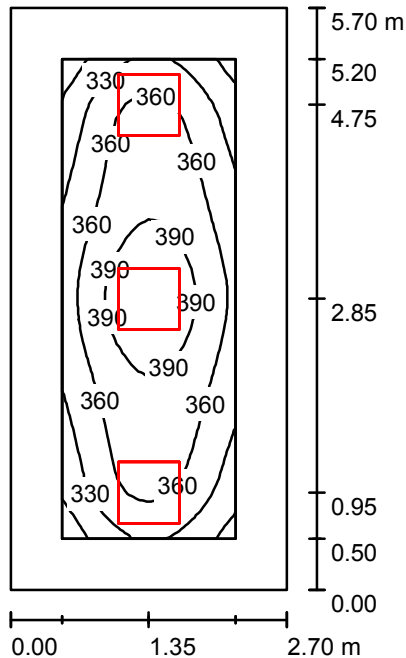


Operator
Telephone
Fax
e-Mail

1.12 / Summary



Height of Room: 3.100 m, Mounting Height: 3.100 m, Maintenance factor: 0.90

Values in Lux, Scale 1:74

Surface	ρ [%]	E_{av} [lx]	E_{min} [lx]	E_{max} [lx]	u_0
Workplane	/	360	280	415	0.780
Floor	20	248	166	305	0.670
Ceiling	70	81	56	112	0.691
Walls (4)	50	182	66	402	/

Workplane:

Height: 0.800 m
Grid: 16 x 32 Points
Boundary Zone: 0.500 m

Illuminance Quotient (according to LG7): Walls / Working Plane: 0.545, Ceiling / Working Plane: 0.226.
Proportion of points with less than 400 lx (for IEQ-7): 93.16%.

Luminaire Parts List

No.	Pieces	Designation (Correction Factor)	Φ (Luminaire) [lm]	Φ (Lamps) [lm]	P [W]
1	3	OCTA-LIGHT PLC OCTL-OLS-30-RNWR (1.000)	3040	3100	28.0
Total:			9120	9300	84.0

Specific connected load: $5.46 \text{ W/m}^2 = 1.52 \text{ W/m}^2/100 \text{ lx}$ (Ground area: 15.39 m^2)